

Vertical Contour Band Saws



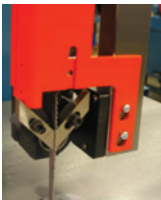
DoALL 2013-V3
Vertical Contour Saw –
20 x 13" Rectangular Capacity
and 13" Round Capacity



DoALL 3613-V3
Vertical Contour Saw –
36 x 13" Rectangular Capacity
and 13" Round Capacity

Among the most versatile metal cutting machine tools available, DoALL Vertical Contour metal cutting band saws can cut aluminum, brass, copper, mild steel, tough tool steel, stainless steel and sheet metal, as well as non-metals like plastics and fibrous materials. DoALL metal cutting, upright band saws are available in sizes to fit your needs and feature band speeds that permit contouring, cut-off and machining of almost any material.

These metalworking band saws are widely used in machine shops, mold shops, maintenance departments, schools and in other areas where cutting a wide variety of materials is required. DoALL also offers a wide variety of available accessories that have been engineered to provide versatility and productivity. All DoALL vertical contour saws provide close tolerance machining and reliable operation.





2012-VH



2013 Series



SCOTT
MACHINERY
Providing Solutions

Tollfree Ph 888-906-4350
Email: sales@scottmachinery.com

www.scottmachinery.com

5209 Luce Avenue, Bldg. 243-B, McClellan, CA 95652

20" Capacity Vertical Contour Saws

DoALL Model Number	2012-VH	2013-V2	2013-V3	2013-V5
Warranty	Parts Only	Parts Only	Parts Only	Parts Only
Warranty Length	Send new parts	Send new parts	Send new parts	Send new parts
Capacity Rectangle at 90° HxW	20 x 12" (510x305mm)	20 x 13" (510x330mm)	20 x 13" (510x330mm)	20 x 13" (510x330mm)
Capacity Round at 90°	12" (305mm)	13" (330mm)	13" (330mm)	13" (330mm)
Blade Drive Motor	3 hp (2.23kW)	2 hp (1.5kW)	3 hp (2.23kW)	5 hp (3.75 kW)
Blade Speeds	30-5500 fpm (9-1680mpm)	55-5200 fpm (17-1585mpm)	30-5500 fpm (9-1680mpm)	550-5500 fpm (170-1680mpm)
Maximum Blade Length	154" (3912mm)	154" (3912mm)	154" (3912mm)	154" (3912mm)
Blade Widths & Gage	1/8"-1" (3.2-25.4mm)	1/8"-1/2" (3.2-12.7mm)	1/8"-1" (3.2-25.4mm)	1/8"-1" (3.2-25.4mm)
More Information at	doallsaws.com/2012-vh	doallsaws.com/2013-v	doallsaws.com/2013-v3	doallsaws.com/2013-v5
Work Height	12" (305mm)	13" (330mm)	13" (330mm)	13" (330mm)
Material Pass Line Height	40" (1020mm)	39" (990mm)	39" (990mm)	39" (990mm)
Floor Space Required	54 x 58 x 82" (1380x1475x2070mm)	44 x 55 x 80" (1128x1399x2036mm)	54 x 45 x 82" (1360x1145x2070mm)	54 x 45 x 82" (1360x1145x2070mm)
Net Weight	1650 lbs (748kg)	1250 lbs (567kg)	1250 lbs (567kg)	1250 lbs (567kg)
Wheel Size	20" (510mm)	20" (510mm)	20" (510mm)	20" (510mm)
Table Size	26-1/2" x 33-1/2" (675x850mm)	26" x 26" (660x660mm)	26" x 26" (660x660mm)	26" x 26" (660x660mm)
Table Tilt Contour Saws	45 and 10 degrees	45 and 15 degrees	45 and 10 degrees	45 and 10 degrees
Blade Guides	Tool steel optional carbide	Tool steel optional carbide	Tool steel optional carbide	Tool steel optional carbide
Hydraulic Pump	1-1/2 hp (1.12kW)	N/A	N/A	N/A
Hydraulic Tank Capacity	3 gal (11.4 L)	N/A	N/A	N/A
Cooling System	Flood optional, Mist optional	Mist optional	Flood standard, Mist optional	Flood standard, Mist optional
Glide Table - T-Slots	1/2" (13mm) [2] Standard	1/2" (13mm) [2] Option	1/2" (13mm) [2] Option	1/2" (13mm) [2] Option
90 Degree Insert	No	Option - does not work with glide table	Option - will not work with glide table	Option - will not work with glide table
Table Capacity	500 lbs (227kg)	500 lbs (227kg)	500 lbs (227kg)	500 lbs (227kg)
Table Stroke	12" (305mm), 18" option	10-3/4" (273mm)	10-3/4" (273mm)	10-3/4" (273mm)
Feed Force	0-175 lbs (0-79kg)	N/A	N/A	N/A
Upper Wheel Adjustment	3" (76mm)	3" (76mm)	3" (76mm)	3" (76mm)



Miter attachment



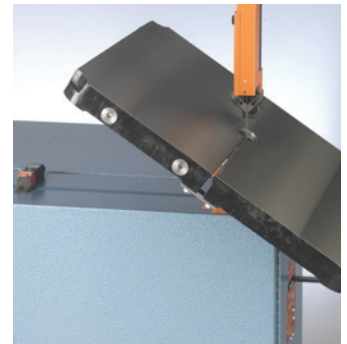
Extended traverse work table



Upper saw guide block



Table tilt angle gauge



Tilted table

Vertical Contour and Zephyr™ Series



3612-VH



3613 Series



ZV-3620

36" Capacity Vertical Contour Saws

Zephyr™ Series

DoALL Model Number	3612-VH	3613-V3	3613-V5	ZV-3620
Warranty	Parts Only	Parts Only	Parts Only	Parts/Service
Warranty Length	Send new parts	Send new parts	Send new parts	1 year standard
Capacity Rectangle at 90° HxW	36 x 12" (915x305mm)	36 x 13" (915x330mm)	36 x 13" (915x330mm)	36 x 15" (914x381mm)
Capacity Round at 90°	12" (305mm)	13" (330mm)	13" (330mm)	Up to 20" (510mm)
Blade Drive Motor	3 hp (2.23kW)	3 hp (2.23kW)	5 hp (3.75 kW)	15 hp (11.1kW)
Blade Speeds	30-5500 fpm (9-1680mpm)	30-5500 fpm (9-1680mpm)	550-5500 fpm (170-1680mpm)	1000-15000 fpm (305-4570mpm)
Maximum Blade Length	199" (5055mm)	199" (5055mm)	199" (5055mm)	232-240" (5893-6096mm)
Blade Widths & Gage	1/8"-1" (3.2-25.4mm)	1/8"-1" (3.2-25.4mm)	1/8"-1" (3.2-25.4mm)	1/8"-1" (3.2-25.4mm)
More Information at	doallsaws.com/3612-vh	doallsaws.com/3613-v3	doallsaws.com/3613-v5	doallsaws.com/zv-3620
Work Height	12" (305mm)	13" (330mm)	13" (330mm)	20" (510mm)
Material Pass Line Height	40" (1020mm)	39" (990mm)	39" (990mm)	41" (1041mm)
Floor Space Required	74 x 45 x 82" (1880x1145x2070mm)	74x45x82"(1880x1145x2070mm)	74x45x82"(1880x1145x2070mm)	52-1/2x80"(1334x2032mm)
Net Weight	2200 lbs (998kg)	1550 lbs (703kg)	1550 lbs (703kg)	3000 lbs (1361kg)
Wheel Size	20" (510mm)	20" (510mm)	20" (510mm)	36" (914mm)
Table Size	24x30-1/2"	26" x 26" (660x660mm)	26" x 26" (660x660mm)	30" x 36" (760x915mm)
Table Tilt Contour Saws	45 and 10 degrees	45 and 10 degrees	45 and 10 degrees	45 degrees right and 10 degrees left
Blade Guides	Carbide faced	Tool Steel	Tool Steel	Double row, heavy duty ball bearing with rollers
Hydraulic Pump	1-1/2 hp (1.12kW)	N/A	N/A	N/A
Hydraulic Tank Capacity	3 gal (11.4 L)	N/A	N/A	N/A
Cooling System	Flood standard, Mist optional	Flood standard, Mist optional	Flood standard, Mist optional	Mist optional
Table Capacity	500 lbs (227kg)	500 lbs (227kg)	500 lbs (227kg)	500 lbs (227kg) at angles 1000 lbs (454kg) total
Table Stroke	12" (305mm)	13" (330mm)	13" (330mm)	N/A
Feed Force	0-175 lbs (0-79kg)	N/A	N/A	N/A
Upper Wheel Adjustment	3" (76mm)	3" (76mm)	3" (76mm)	3" (76mm)



Mist lubrication



Rip fence



Secondary table



Work holding jaw with handles



Blade welder

Standard Equipment on most models:

- High-speed, insert-type guide blocks for 1/8"-1/2" bands
- Steel guide inserts for bands 1/4", 3/8" and 1/2"
- Job selector
- Band speed indicator
- Chip blower
- Chip pan
- Work light
- Band tension indicator
- Dual range transmission
- Band door interlocks
- Post elevating hand-wheel
- Variable frequency AC drive
- Digital copy of operation and parts manuals
- Tool kit
- DoALL blade and cutting fluid

Optional Accessories on most models:

- Fabricated steel auxiliary table
- Blade welder Model DBW-15
- Work holding jaw with handles
- Mist lubricator
- Magnifying attachment
- Standard rip fence
- Cut-off and mitering attachment
- Disk cutting attachment
- Chip box



Chip blower



Air power feed



Guide blocks



Work light



Magnifying attachment



Protractor workstop

SCOTT
MACHINERY
Providing Solutions
Tollfree Ph 888-906-4350
Email: sales@scottmachinery.com
www.scottmachinery.com
5209 Luce Avenue, Bldg. 243-B, McClellan, CA 95652